

DETAX Processing Manual

FREEPRINT® crown & **FREEPRINT®** denture

Bonding the printed denture teeth to the printed denture base.

- Follow the IFU instructions for washing the denture base and denture teeth with IPA.

ATTENTION

- After washing, don't post-expose the uncured components.
- Wear personal protective equipment when handling the uncured material.



Remove the Supports carefully



**Check the fit of the teeth in the denture base
from each side**

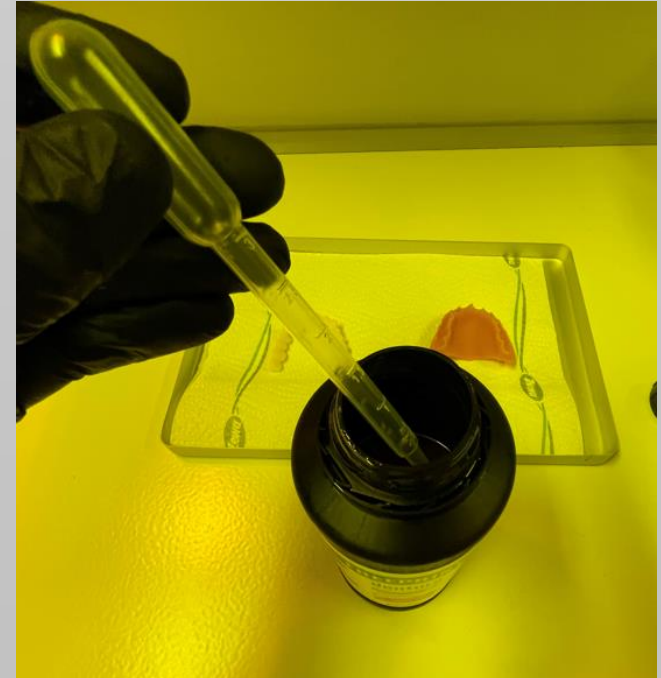




- **FREEPRINT®** denture resin is used for bonding the denture teeth.
- **Make sure that you use the same color which you used for printing.**

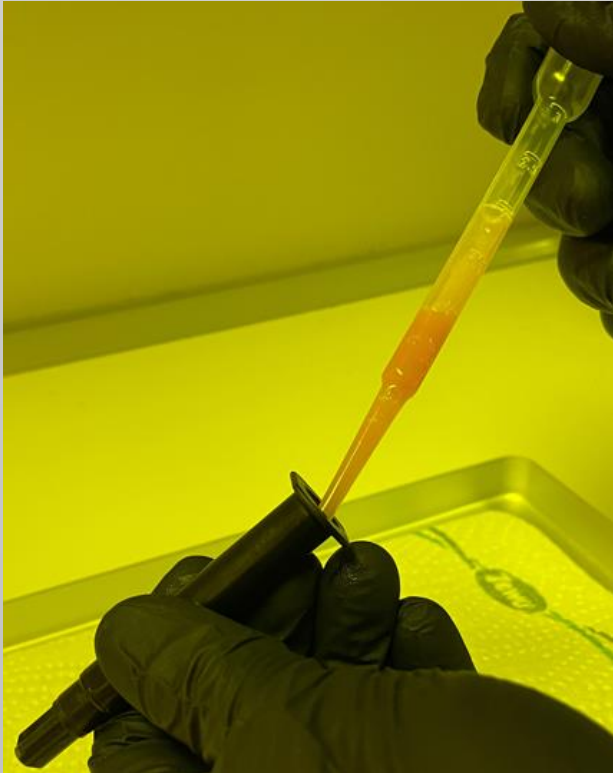
Application with an application syringe

- DETAX recommend an application syringe for the application of the **FREEPRINT®** denture material.
- To remove the **FREEPRINT®** denture resin from the bottle, DETAX recommend a pipette.



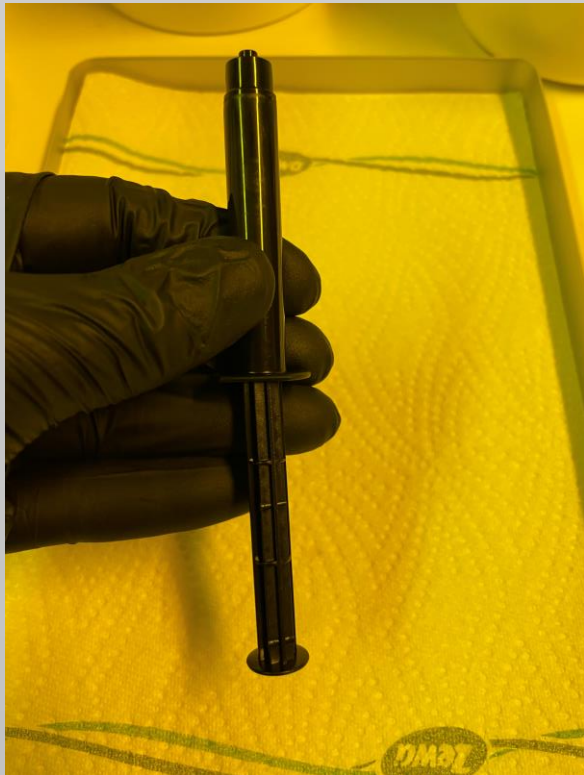
Application with an application syringe

- Fill the application syringe carefully.
- After filling the syringe, remove the cap carefully.



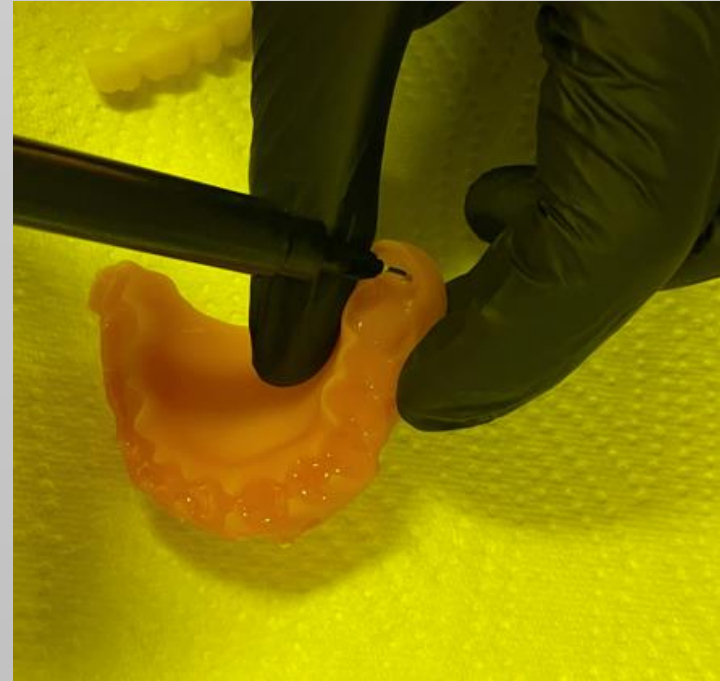
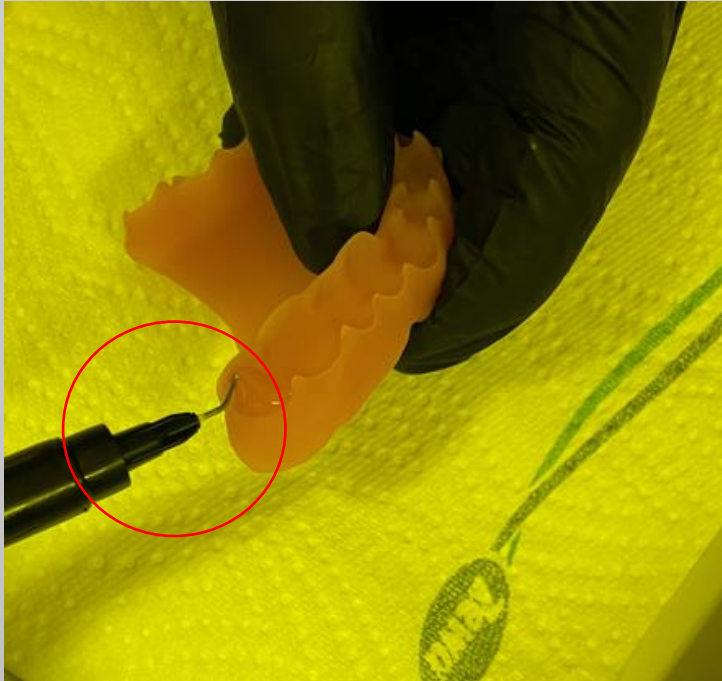
Application with an application syringe

- Press the piston carefully and slowly into the syringe.
- Until a small amount of material comes out of the opening.



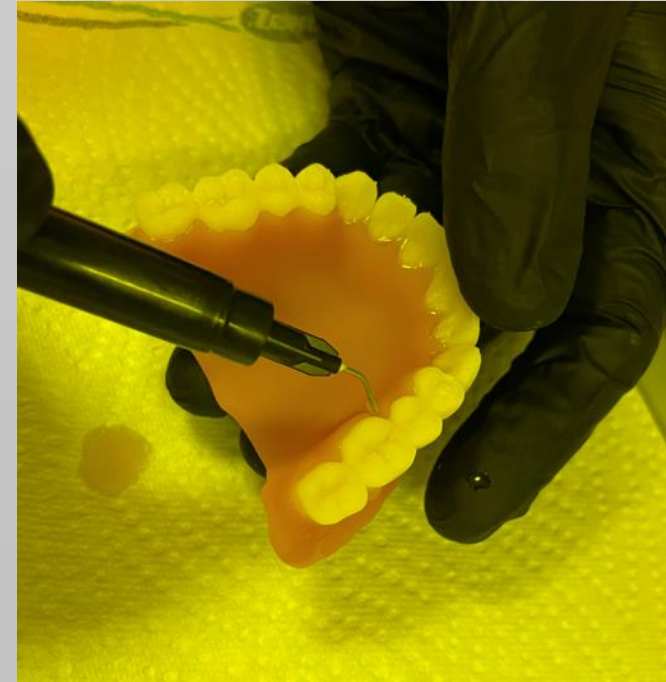
Application with an application syringe

- Place the application needle on the syringe.
- Apply the **FREEPRINT**[®] denture material with the syringe into the cavities with slight pressure.



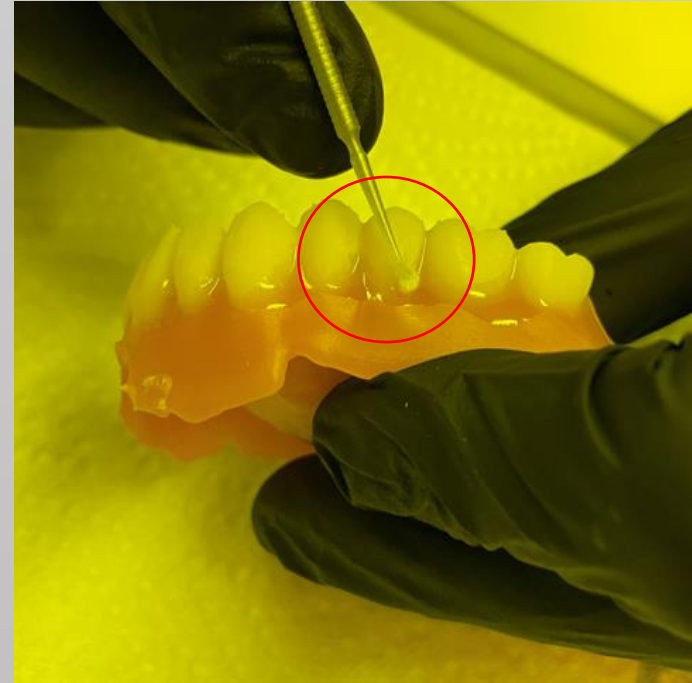
Application with an application syringe

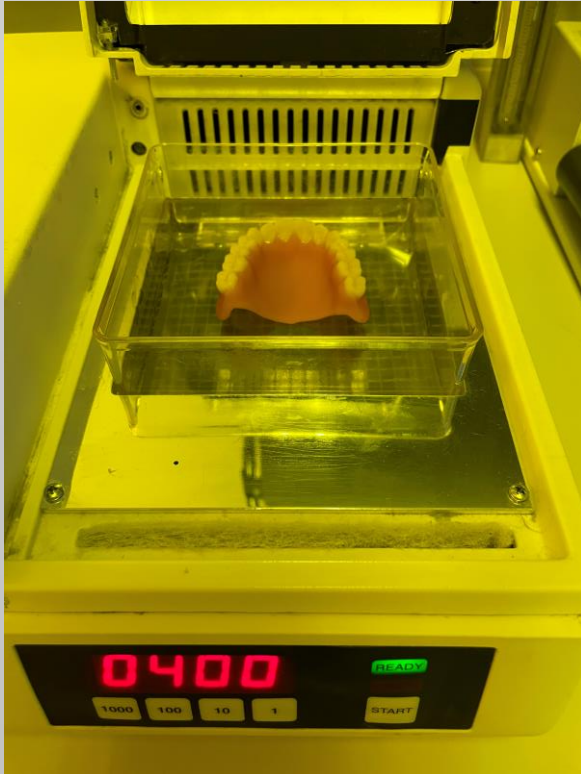
- Carefully place the tooth arch on the denture and press it down smoothly with 2 fingers.
- Check all gaps, if there is enough liquid material for bonding.



Application with an application syringe

- Using a brush to remove the excess material on the cervix of the teeth.

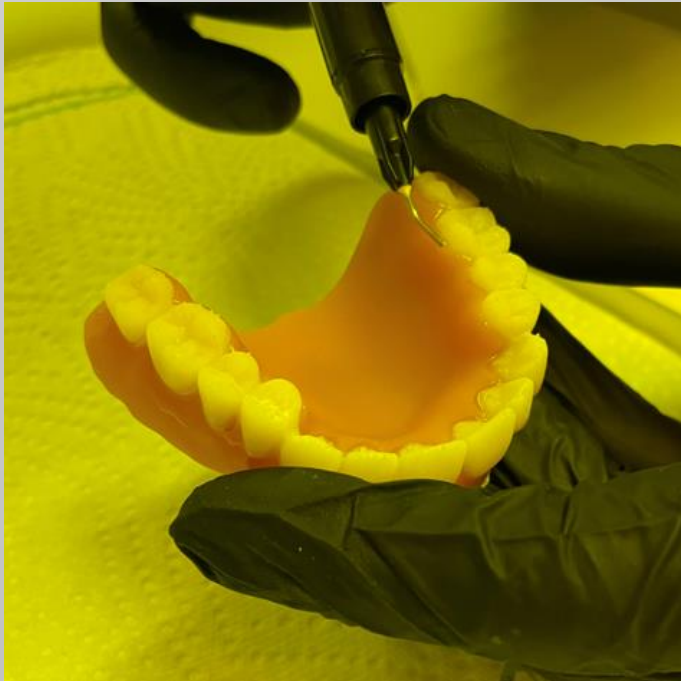


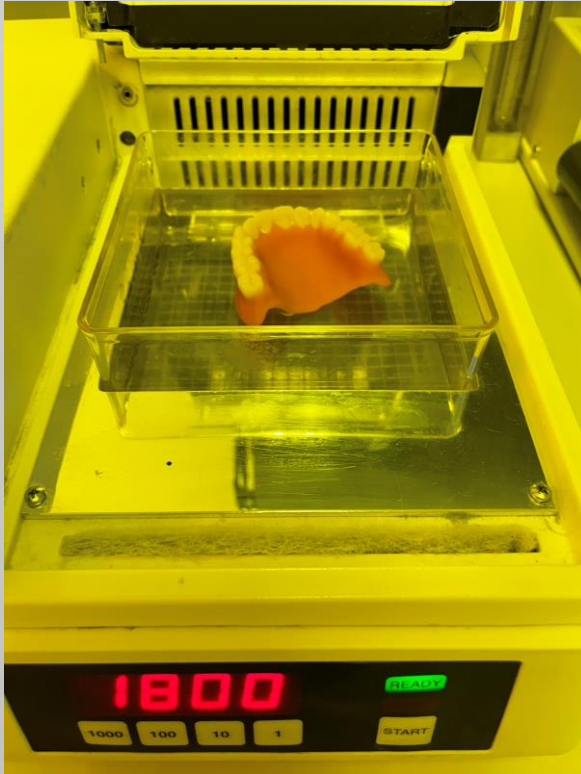


- For pre-curing, the denture (base and teeth) is cured with 400 flashes (Otoflash G171 N2) with nitrogen.
- Make sure you use the correct tray (UV360).

Application with an application syringe

- If material needs to be applied again, you can apply it now before the final curing.
- After final use, please close the syringe with the cap.





- For final curing, the denture (base and teeth) is cured with 2 x 1800 flashes (Otoflash G171 N2) with nitrogen.
- Between the 2 curing cycles, please turn the denture around.

Finishing after light curing

- Interdental fine finishing.

If necessary, the excess **FREEPRINT®** denture resin can be grinded off in the interdental area using a diamond disc.

- Grinding in the occlusion.

Place the denture on the model and check the centric, protrusion, retral movements and sideshift in the articulator - the occlusion is successively grinding according to the grinding rules.

Finishing after light curing

- **Polish**

Smoothing the surface of the denture before polishing can be done classically with sandpaper strips.

The polishing of the denture is done at the polishing unit from coarse to fine: 1. brush/pumice, 2. brush/polish and 3. buff/polish.

- **Cleaning**

Clean the denture in the cleaning liquid in the ultrasonic unit for max. 1 min.

It is possible to use a toothbrush and a steam jet for cleaning

Finishing after light curing



FREEPRINT® denture



- **FREEPRINT® denture pink-transparent 500 g 02060**
- **FREEPRINT® denture pink-transparent 1.000 g 02040**
- **FREEPRINT® denture pink 1.000 g 04092**

FREEPRINT® crown



- **FREEPRINT® crown A1 500 g 02372** | **1.000 g 02376**
- **FREEPRINT® crown A2 500 g 02378** | **1.000 g 02415**
- **FREEPRINT® crown A3 500 g 02417** | **1.000 g 02446**
- **FREEPRINT® crown B1 500 g 02481** | **1.000 g 02519**
- **FREEPRINT® crown B3 500 g 02645** | **1.000 g 02758**
- **FREEPRINT® crown C2 500 g 02766** | **1.000 g 02782**
- **FREEPRINT® crown D3 500 g 02783** | **1.000 g 02825**
- **FREEPRINT® crown BL 500 g 02845** | **1.000 g 02884**

Accessories

- application syringe
- Smartbrush, silver 100 pcs. 02715

All articles are available at the DETAX shop at
www.detax.com

DETAX

HIGHEND MEDICAL MATERIALS

**HIGHEND MATERIALS 100%
MADE IN GERMANY**

Phone +49 7243 / 510-0
Fax +49 7243 / 510-100
post@detax.de
support@detax.de