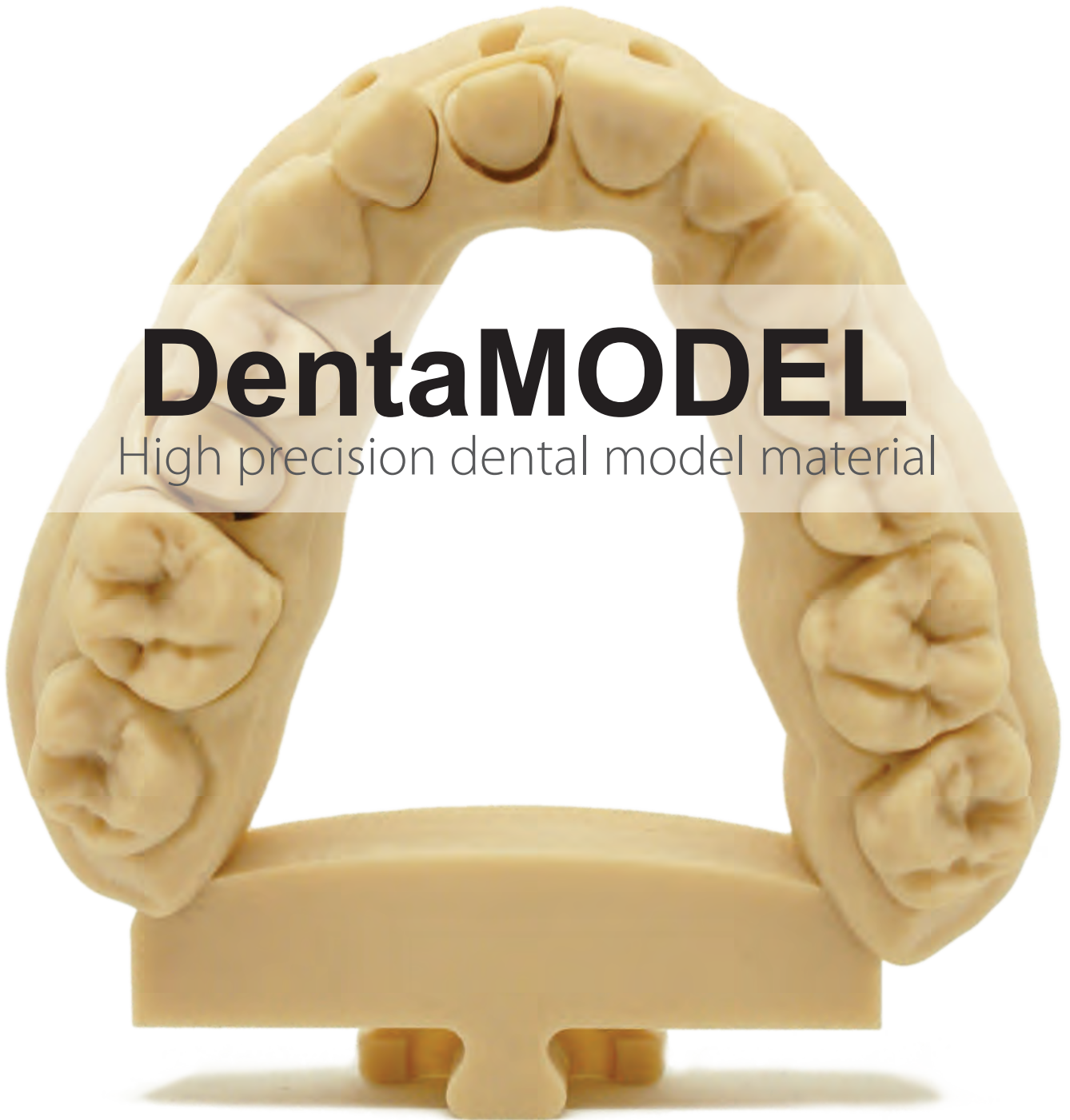


# DentaMODEL

High precision dental model material



## High precision dental model material

DentaMODEL is designed for the digital production of dental models with high accuracy and visual properties matching that of traditional dental stone. DentaMODEL produces crisp and precise dental models for all applications at high print speeds on both 385nm and 405nm printers.



## Applications

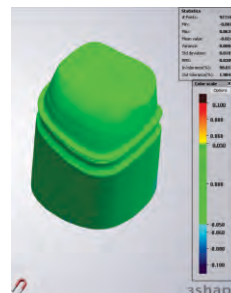
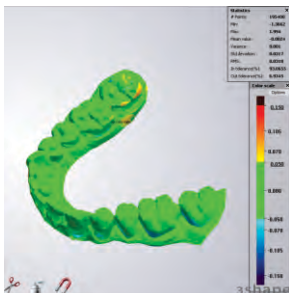
- All types of dental models for crown and bridge, and implants.
- Orthodontic aligner thermo-forming models.

**\$175 p/L**

USD. Available in 500mL and 1L bottles

## Reliable accuracy for quality assurance and patient safety.

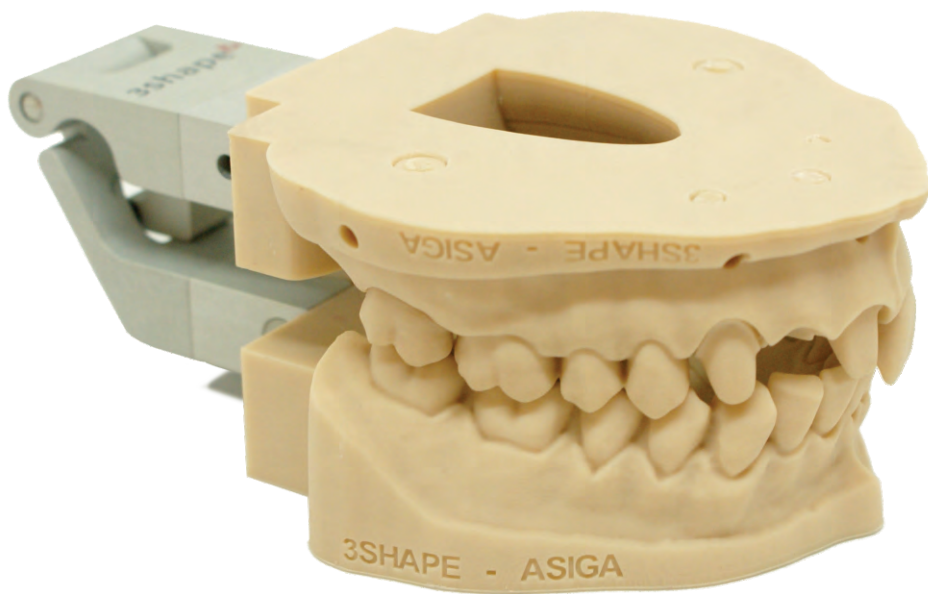
3D scans of full-arch dental models printed in DentaMODEL demonstrate over 93% of data points are within 50 microns of the original CAD file with a standard deviation of 31 microns.



3D Printer: Asiga MAX UV  
Scanner: 3Shape D850  
Software: 3Shape Conceive Analyzer.

# **ASIGA<sup>®</sup>**

DIGITAL MANUFACTURING SOLUTIONS



For more information visit  
[www.asiga.com](http://www.asiga.com)